

Primary Five Curriculum Briefing English Language (EL) Department

Learners driven by Passion . Leaders guided by Values

Respect . Responsibility . Resilience . Integrity . Care . Harmony



STELLAR

STrategies for English Language Learning And Reading

STELLAR aims to strengthen both **language and reading skills** as well as **promote a positive attitude** towards learning in the foundational years through the use of **well-established, learner-centred and developmentally appropriate pedagogical** approaches using **authentic children's literature**.

Areas of Language Learning in EL Syllabus

Areas of Language Learning in EL Syllabus cover the following six key areas:

1. Writing and Representing
2. Speaking and Representing
3. Reading and Viewing
4. Listening and Viewing
5. Vocabulary
6. Grammar

Assessment

Term 1	Term 2	Term 3	Term 4
Weighted Assessment 1 (1 hour) <ul style="list-style-type: none">• Language Use and Comprehension	Weighted Assessment 2 (1 hour) <ul style="list-style-type: none">• Continuous Writing	Weighted Assessment 3 <ul style="list-style-type: none">• Performance Task	End-of-Year Examination (EYE) <ul style="list-style-type: none">• Paper 1 (Writing)• Paper 2 (Language Use and Comprehension)• Paper 3 (Listening Comprehension)• Paper 4 (Oral)

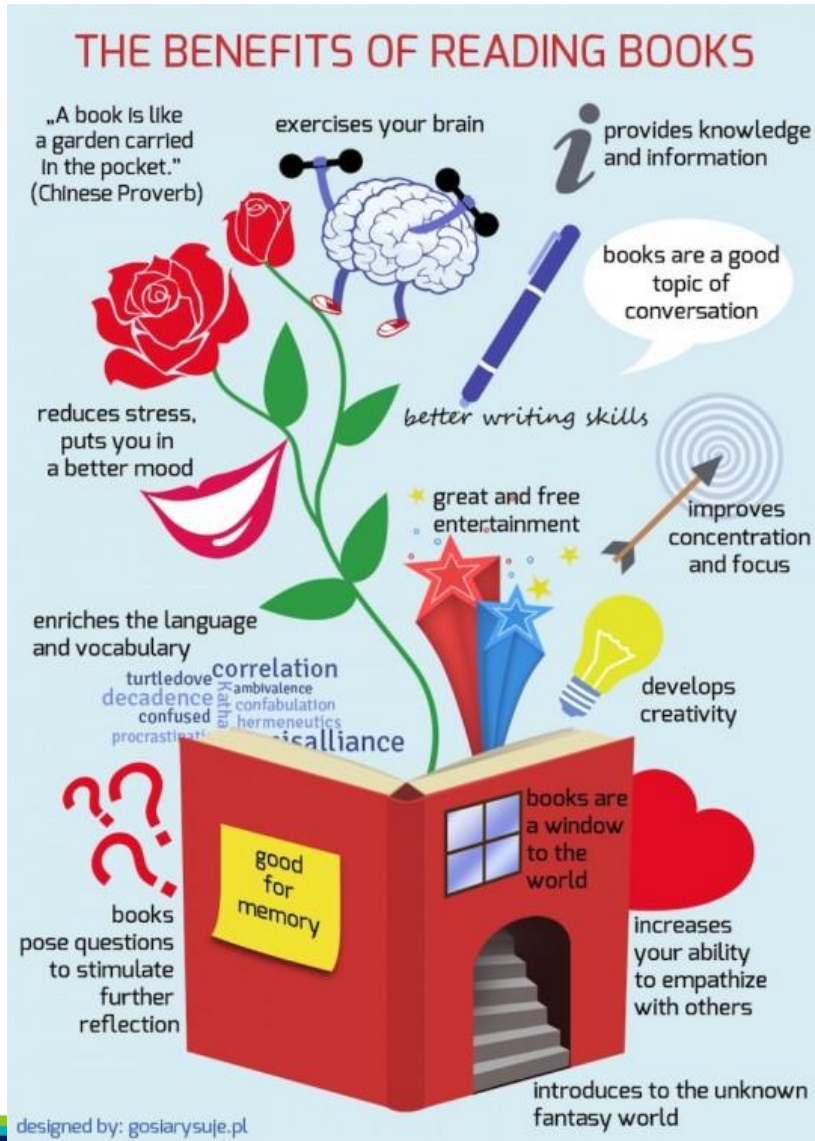
Standard English Language Assessment: EYE

Component	Marks	Duration
Paper 1 <ul style="list-style-type: none"> • Continuous Writing • Situational Writing 	36 14	1 h 10 min
Paper 2 – Language Use & Comprehension Booklet A <ul style="list-style-type: none"> • Grammar MCQ (10m) • Vocabulary MCQ (5m) • Vocabulary Cloze MCQ (5m) • Visual Text MCQ (5m) Booklet B <ul style="list-style-type: none"> • Grammar Cloze (10m) • Editing for Spelling & Grammar (10m) • Comprehension Cloze (15m) • Synthesis & Transformation (10m) • Comprehension Open-ended (20m) 	90	1 h 50 min
Paper 3 – Listening Comprehension	20	Approx. 40 min
Paper 4 – Oral <ul style="list-style-type: none"> • Reading Aloud (15m) • Stimulus-Based Conversation (25m) 	40	Approx. 10 min
Total	200	

**Foundation English Language
Assessment: EYE**

Component	Marks	Duration
Paper 1 <ul style="list-style-type: none"> • Continuous Writing • Situational Writing 	16 9	1h 10min
Paper 2 – Language Use & Comprehension Booklet A <ul style="list-style-type: none"> • Grammar MCQ (5m) • Punctuation MCQ (2m) • Vocabulary Cloze MCQ (3m) • Visual Text MCQ (5m) Booklet B <ul style="list-style-type: none"> • Form Filling (3m) • Editing for Spelling (3m) • Editing for Grammar (3m) • Synthesis (3m) • Comprehension Cloze (3m) • Comprehension Open-ended (10m) 	40	1h 20min
Paper 3 – Listening Comprehension (15m)	15	Approx. 35min
Paper 4 – Oral <ul style="list-style-type: none"> • Reading Aloud (8m) • Stimulus-Based Conversation (12m) 	20	Approx. 10min
Total	100	

How to Support Your Child's Learning



1. Encourage reading and to read widely to include newspaper reading
(You can visit NLB website for the recommended list of books for Primary 5
<https://www.nlb.gov.sg/SearchDiscover/ExploreourPublications/RecommendedReads/ForChildren/Primary5.aspx>)
2. Encourage your child to annotate when reading comprehension passages
3. Get your child to share his/her experience in school daily/ weekly
4. Encourage your child to do journaling

Thank
you

